

MATERIAL NOTES

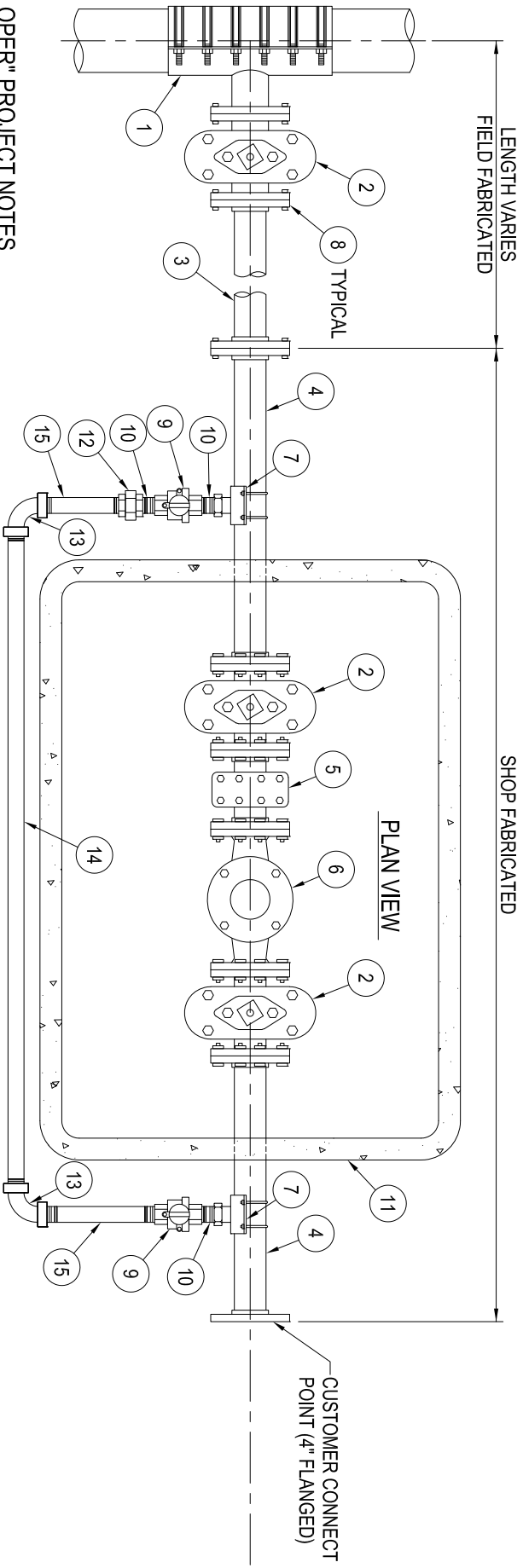
- 1 "MAIN SIZE" x 4" TAPPING SLEEVE PER STD. DWG. No. W-12
- 2 4" RESILIENT WEDGE GATE VALVE (FLG x FLG) MUELLER A-2360-6 (SEE NOTE 3)
- 3 4" STD. STEEL SPOOL, WELDED (FLG x FLG) LENGTH VARIES, FIELD VERIFY
- 4 4" STD. STEEL COAL TAR ENAMEL (BITUMASTIC) COATED SPOOL, WELDED (FLG. x FLG.) 24-INCHES LONG
- 5 4" HERSEY STRAINER, BRONZE (FLG x FLG) W/ BRASS BOLTS
- 6 4" HERSEY RADIO READ TURBO METER, BRONZE (FLG x FLG) W/ BRASS BOLTS
- 7 4" STD. STEEL x 2" SADDLE (F.I.P.T.) DOUBLE STRAP, BRONZE, MUELLER OR APPROVED EQUAL
- 8 4" NUTS, BOLTS, AND GASKET SET
- 9 2" BALL VALVE CURB STOP, BRONZE (F.I.P.T. x F.I.P.T.) W/ PADLOCK WINGS, MUELLER B-20200, OR APPROVED EQUAL, WITH IRRIGATION / VALVE CAN WITH LID
- 10 2" CLOSE NIPPLE, BRASS

MATERIAL NOTES (CONTINUE)

- 11 4x6x4" METER BOX WITH LID, PER PPHCSD SPECIFICATIONS, CENTERED IN BOX
- 12 2" UNION, BRONZE (F.I.P.T. x F.I.P.T.)
- 13 2" 90° ELBOW, BRONZE (F.I.P.T. x F.I.P.T.)
- 14 2" PIPE, BRASS (M.I.P.T. x M.I.P.T.) 60" LONG, PLACED OUTSIDE OF BOX
- 15 2" PIPE, BRASS (M.I.P.T. x M.I.P.T.) LENGTH AS REQD, PLACED OUTSIDE OF BOX

GENERAL NOTES

1. ALL SERVICE LINES SHALL HAVE A MINIMUM DEPTH OF 24"
2. PROVIDE (2" MIN. THICKNESS) GRAVEL BASE FOR METER BOX
3. PROVIDE STANDARD VALVE CAN ASSEMBLY FOR EACH GATE VALVE PER STD. DWG. No. W-5 (REQUIRED FOR VALVES OUTSIDE OF METER BOX)
4. CONTRACTOR TO PROVIDE BACKFLOW DEVICE AT CUSTOMER CONNECTION POINT
5. ALL MATERIALS SHALL BE NEW



"DEVELOPER" PROJECT NOTES

1. WHEN A DEVELOPER'S CONTRACTOR INSTALLS A NEW WATER MAIN, CONTRACTOR WILL INSTALL ITEMS No. 1, 2, 3, AND 8 (FIELD FABRICATION)
2. WHEN A DEVELOPER'S PROJECT DOES NOT REQUIRE A NEW WATER MAIN, ALL ITEMS WILL BE INSTALLED BY PPHCSD STAFF

RECOMMENDED BY:	REV.	DATE	BY
Engineering	Date		
APPROVED BY:	Date		
Operations	Date		

**PHELAN PIÑON HILLS
COMMUNITY SERVICES DISTRICT**

4" METER SERVICE ASSEMBLY



STD. DWG. No.
W-25