

MATERIAL NOTES

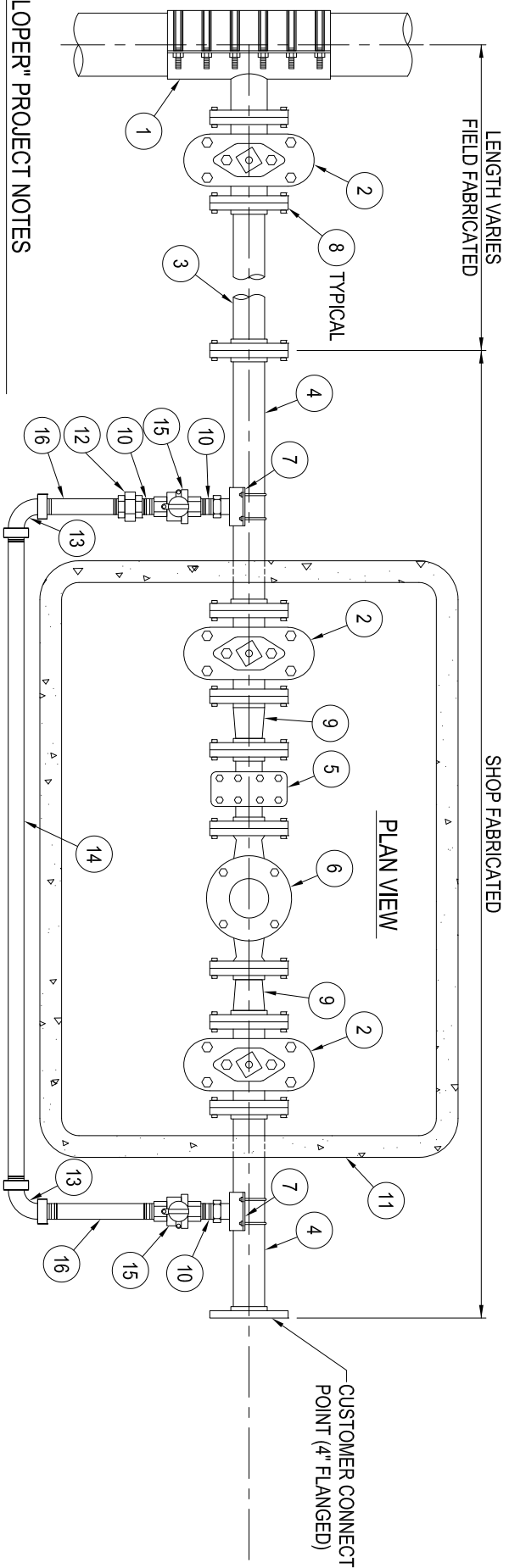
- 1 "MAIN SIZE" x 4" TAPPING SLEEVE PER STD. DWG. No. W-12
- 2 4" RESILIENT WEDGE GATE VALVE (FLG x FLG) MUELLER A-2360-6 (SEE NOTE 3)
- 3 4" STD. STEEL SPOOL, WELDED (FLG x FLG) LENGTH VARIES, FIELD VERIFY
- 4 4" STD. STEEL COAL TAR ENAMEL (BITUMASTIC) COATED SPOOL, WELDED (FLG x FLG) 24-INCHES LONG
- 5 3" HERSEY STRAINER, BRONZE (FLG x FLG) W/ BRASS BOLTS
- 6 3" HERSEY RADIO READ TURBO METER, BRONZE (FLG x FLG) W/ BRASS BOLTS
- 7 4" STD. STEEL x 2" SADDLE (F.I.P.T.), DOUBLE STRAP, BRONZE, MUELLER OR APPROVED EQUAL
- 8 4" NUTS, BOLTS, AND GASKET SET
- 9 COAL TAR ENAMEL (BITUMASTIC) COATED 3"x4" BELL REDUCER, WELDED FLANGE
- 10 2" CLOSE NIPPLE, BRASS
- 11 4x6x4" METER BOX WITH LID, PER PPHOCD SPECIFICATIONS, CENTERED IN BOX

MATERIAL NOTES (CONTINUE)

- 12 2" UNION, BRONZE (F.I.P.T. x F.I.P.T.)
- 13 2" 90° ELBOW, BRONZE (F.I.P.T. x F.I.P.T.)
- 14 2" PIPE, BRASS (M.I.P.T. x M.I.P.T.), 60" LONG, PLACED OUTSIDE OF BOX
- 15 2" BALL VALVE CURB STOP, BRONZE (F.I.P.T. x F.I.P.T.) W/ PADLOCK WINGS MUELLER B-20200, OR APPROVED EQUAL, WITH IRRIGATION / VALVE CAN WITH LID
- 16 2" PIPE, BRASS (M.I.P.T. x M.I.P.T.) LENGTH AS REQ'D, PLACED OUTSIDE OF BOX

GENERAL NOTES


1. ALL SERVICE LINES SHALL HAVE A MINIMUM DEPTH OF 24"
2. PROVIDE (2" MIN. THICKNESS) GRAVEL BASE FOR METER BOX
3. PROVIDE STANDARD VALVE CAN ASSEMBLY FOR EACH GATE VALVE PER STD. DWG. No. W- 5 (REQUIRED FOR VALVES OUTSIDE OF METER BOX)
4. CONTRACTOR TO PROVIDE BACKFLOW DEVICE AT CUSTOMER CONNECTION POINT
5. ALL MATERIALS SHALL BE NEW



"DEVELOPER" PROJECT NOTES

1. WHEN A DEVELOPER'S CONTRACTOR INSTALLS A NEW WATER MAIN, CONTRACTOR WILL INSTALL ITEMS No. 1, 2, 3, AND 8 (FIELD FABRICATION)
2. WHEN A DEVELOPER'S PROJECT DOES NOT REQUIRE A NEW WATER MAIN, ALL ITEMS WILL BE INSTALLED BY PPHOCD STAFF

Revised: April 22, 2020

RECOMMENDED BY: Engineering _____ Date _____	REV.	DATE	BY	PHELAN PIÑON HILLS COMMUNITY SERVICES DISTRICT		STD. DWG. No. W-24
	APPROVED BY:					
Operations _____	Date _____			3" METER SERVICE ASSEMBLY		