

# MURPHY CONSTRUCTION

13330 Ranchero Rd Suite 1 Oak Hills, CA 92344

(760) 244-6311

[murfcon@aol.com](mailto:murfcon@aol.com)

CA License # 319861

04-01-2019

## Estimate PPHCSD 04012019

Phelan Pinion Hills Community Service District

Sheep Creek Rd

Phelan CA

Project: New Commercial Building

### Scope of Work

---

- 1) Construct A New 8324 Sq. ft Administration Building Per Preliminary Layout
- 2) All on Site improvements per plan for Phase 2
- 3) Drive approaches and Street improvements on Sheep Creek Rd

---

**Total**

**\$3,235,000.00**

#### Estimate Options:

**5000 sq ft Expansion Building Exterior Shell Only Add \$ 525,000 (if done at the same time as main building)**

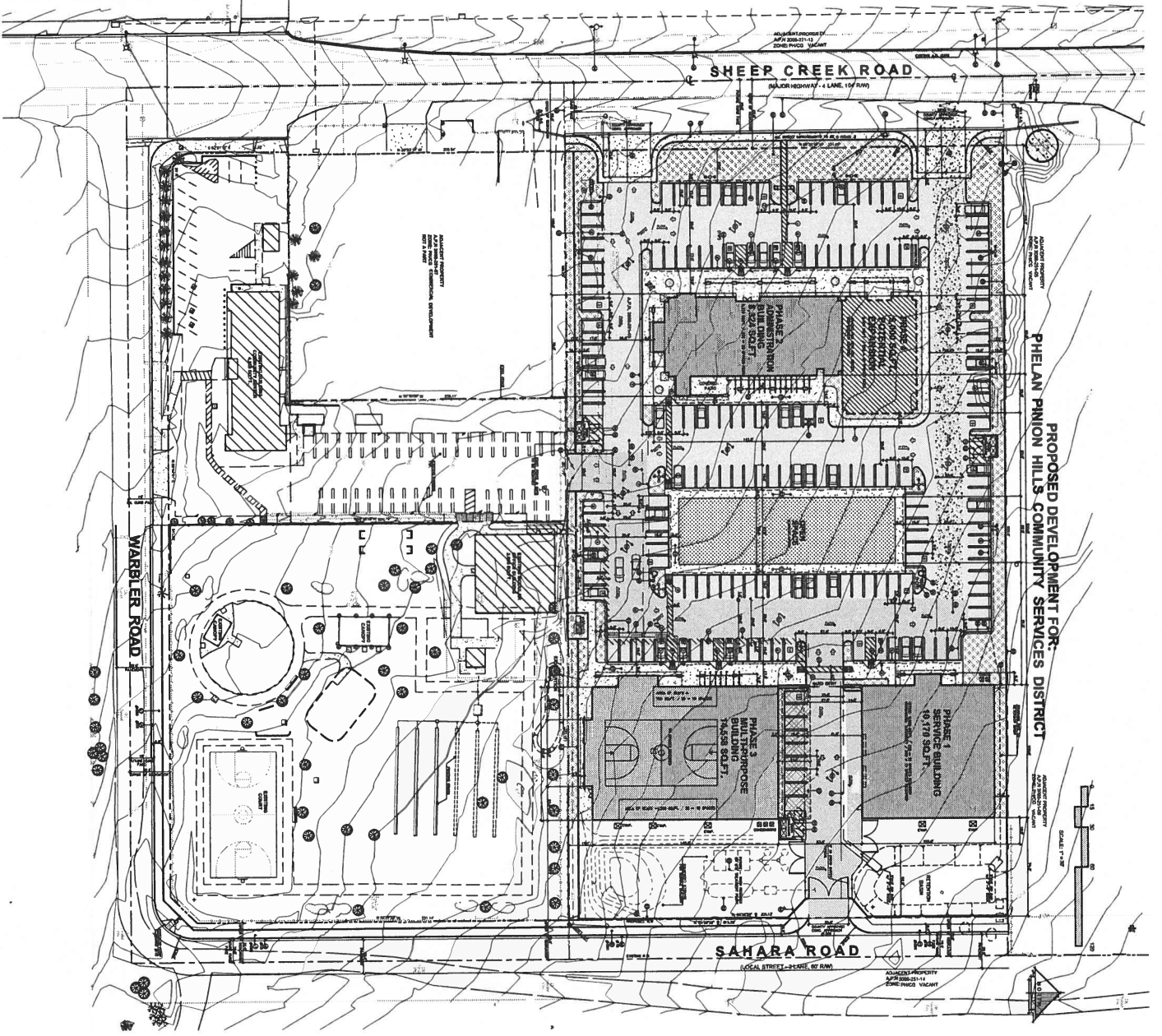
**Amount needed to start the Drawing and Approval Process \$ 100,000**

**Thank you for the Opportunity to work with you. If you have any questions please Call**

**Tom Murphy**

**Murphy Construction**

**(760) 954-4407**



**PROPOSED DEVELOPMENT FOR:**  
**PHELAN PINION HILLS COMMUNITY SERVICES DISTRICT**

**SHEER CREEK ROAD**  
 6 LANE HIGHWAY / 4 LANE 15' ROW

**SAHARA ROAD**  
 LOCAL STREET - 6 FEET ROW

**WARBLER ROAD**

- 1. GENERAL NOTES AND SPECIFICATIONS
- 2. GENERAL NOTES AND SPECIFICATIONS
- 3. GENERAL NOTES AND SPECIFICATIONS
- 4. GENERAL NOTES AND SPECIFICATIONS
- 5. GENERAL NOTES AND SPECIFICATIONS
- 6. GENERAL NOTES AND SPECIFICATIONS
- 7. GENERAL NOTES AND SPECIFICATIONS
- 8. GENERAL NOTES AND SPECIFICATIONS
- 9. GENERAL NOTES AND SPECIFICATIONS
- 10. GENERAL NOTES AND SPECIFICATIONS
- 11. GENERAL NOTES AND SPECIFICATIONS
- 12. GENERAL NOTES AND SPECIFICATIONS
- 13. GENERAL NOTES AND SPECIFICATIONS
- 14. GENERAL NOTES AND SPECIFICATIONS
- 15. GENERAL NOTES AND SPECIFICATIONS
- 16. GENERAL NOTES AND SPECIFICATIONS
- 17. GENERAL NOTES AND SPECIFICATIONS
- 18. GENERAL NOTES AND SPECIFICATIONS
- 19. GENERAL NOTES AND SPECIFICATIONS
- 20. GENERAL NOTES AND SPECIFICATIONS
- 21. GENERAL NOTES AND SPECIFICATIONS
- 22. GENERAL NOTES AND SPECIFICATIONS
- 23. GENERAL NOTES AND SPECIFICATIONS
- 24. GENERAL NOTES AND SPECIFICATIONS
- 25. GENERAL NOTES AND SPECIFICATIONS
- 26. GENERAL NOTES AND SPECIFICATIONS
- 27. GENERAL NOTES AND SPECIFICATIONS
- 28. GENERAL NOTES AND SPECIFICATIONS
- 29. GENERAL NOTES AND SPECIFICATIONS
- 30. GENERAL NOTES AND SPECIFICATIONS
- 31. GENERAL NOTES AND SPECIFICATIONS
- 32. GENERAL NOTES AND SPECIFICATIONS
- 33. GENERAL NOTES AND SPECIFICATIONS
- 34. GENERAL NOTES AND SPECIFICATIONS
- 35. GENERAL NOTES AND SPECIFICATIONS
- 36. GENERAL NOTES AND SPECIFICATIONS
- 37. GENERAL NOTES AND SPECIFICATIONS
- 38. GENERAL NOTES AND SPECIFICATIONS
- 39. GENERAL NOTES AND SPECIFICATIONS
- 40. GENERAL NOTES AND SPECIFICATIONS
- 41. GENERAL NOTES AND SPECIFICATIONS
- 42. GENERAL NOTES AND SPECIFICATIONS
- 43. GENERAL NOTES AND SPECIFICATIONS
- 44. GENERAL NOTES AND SPECIFICATIONS
- 45. GENERAL NOTES AND SPECIFICATIONS
- 46. GENERAL NOTES AND SPECIFICATIONS
- 47. GENERAL NOTES AND SPECIFICATIONS
- 48. GENERAL NOTES AND SPECIFICATIONS
- 49. GENERAL NOTES AND SPECIFICATIONS
- 50. GENERAL NOTES AND SPECIFICATIONS
- 51. GENERAL NOTES AND SPECIFICATIONS
- 52. GENERAL NOTES AND SPECIFICATIONS
- 53. GENERAL NOTES AND SPECIFICATIONS
- 54. GENERAL NOTES AND SPECIFICATIONS
- 55. GENERAL NOTES AND SPECIFICATIONS
- 56. GENERAL NOTES AND SPECIFICATIONS
- 57. GENERAL NOTES AND SPECIFICATIONS
- 58. GENERAL NOTES AND SPECIFICATIONS
- 59. GENERAL NOTES AND SPECIFICATIONS
- 60. GENERAL NOTES AND SPECIFICATIONS
- 61. GENERAL NOTES AND SPECIFICATIONS
- 62. GENERAL NOTES AND SPECIFICATIONS
- 63. GENERAL NOTES AND SPECIFICATIONS
- 64. GENERAL NOTES AND SPECIFICATIONS
- 65. GENERAL NOTES AND SPECIFICATIONS
- 66. GENERAL NOTES AND SPECIFICATIONS
- 67. GENERAL NOTES AND SPECIFICATIONS
- 68. GENERAL NOTES AND SPECIFICATIONS
- 69. GENERAL NOTES AND SPECIFICATIONS
- 70. GENERAL NOTES AND SPECIFICATIONS
- 71. GENERAL NOTES AND SPECIFICATIONS
- 72. GENERAL NOTES AND SPECIFICATIONS
- 73. GENERAL NOTES AND SPECIFICATIONS
- 74. GENERAL NOTES AND SPECIFICATIONS
- 75. GENERAL NOTES AND SPECIFICATIONS
- 76. GENERAL NOTES AND SPECIFICATIONS
- 77. GENERAL NOTES AND SPECIFICATIONS
- 78. GENERAL NOTES AND SPECIFICATIONS
- 79. GENERAL NOTES AND SPECIFICATIONS
- 80. GENERAL NOTES AND SPECIFICATIONS
- 81. GENERAL NOTES AND SPECIFICATIONS
- 82. GENERAL NOTES AND SPECIFICATIONS
- 83. GENERAL NOTES AND SPECIFICATIONS
- 84. GENERAL NOTES AND SPECIFICATIONS
- 85. GENERAL NOTES AND SPECIFICATIONS
- 86. GENERAL NOTES AND SPECIFICATIONS
- 87. GENERAL NOTES AND SPECIFICATIONS
- 88. GENERAL NOTES AND SPECIFICATIONS
- 89. GENERAL NOTES AND SPECIFICATIONS
- 90. GENERAL NOTES AND SPECIFICATIONS
- 91. GENERAL NOTES AND SPECIFICATIONS
- 92. GENERAL NOTES AND SPECIFICATIONS
- 93. GENERAL NOTES AND SPECIFICATIONS
- 94. GENERAL NOTES AND SPECIFICATIONS
- 95. GENERAL NOTES AND SPECIFICATIONS
- 96. GENERAL NOTES AND SPECIFICATIONS
- 97. GENERAL NOTES AND SPECIFICATIONS
- 98. GENERAL NOTES AND SPECIFICATIONS
- 99. GENERAL NOTES AND SPECIFICATIONS
- 100. GENERAL NOTES AND SPECIFICATIONS

**UTILITIES**

EXISTING UTILITIES: GROUND TO GROUND  
 48" DIAMETER WATER MAIN (20' COVER)  
 48" DIAMETER SEWER MAIN (20' COVER)  
 48" DIAMETER GAS MAIN (20' COVER)  
 48" DIAMETER CABLE TV MAIN (20' COVER)  
 48" DIAMETER TELEPHONE MAIN (20' COVER)  
 48" DIAMETER FIBER OPTIC MAIN (20' COVER)

**PROJECT DATA**

**CLIENT:** PHELAN PINION HILLS COMMUNITY SERVICES DISTRICT  
**PROJECT NO.:** PH19-01  
**DATE:** 01/15/2019

**DESIGNER:** STEENO ARCHITECTURAL & PLANNING  
**ADDRESS:** 11774 HERRING ROAD, SUITE 100, HERRING, CA 95031  
**PHONE:** (925) 745-6800  
**WWW:** WWW.STEENO.COM

**SCALE:** 1/8" = 1'-0"

**KEY NOTES**

1. ALL CONSTRUCTION SHALL BE IN ACCORDANCE WITH THE CALIFORNIA CIVIL ENGINEERING BOARD (C.C.E.B.) SPECIFICATIONS FOR CEMENT CONCRETE CURBS AND GUTTERS.

2. ALL CONSTRUCTION SHALL BE IN ACCORDANCE WITH THE CALIFORNIA CIVIL ENGINEERING BOARD (C.C.E.B.) SPECIFICATIONS FOR CURBS AND GUTTERS.

3. ALL CONSTRUCTION SHALL BE IN ACCORDANCE WITH THE CALIFORNIA CIVIL ENGINEERING BOARD (C.C.E.B.) SPECIFICATIONS FOR CURBS AND GUTTERS.

4. ALL CONSTRUCTION SHALL BE IN ACCORDANCE WITH THE CALIFORNIA CIVIL ENGINEERING BOARD (C.C.E.B.) SPECIFICATIONS FOR CURBS AND GUTTERS.

5. ALL CONSTRUCTION SHALL BE IN ACCORDANCE WITH THE CALIFORNIA CIVIL ENGINEERING BOARD (C.C.E.B.) SPECIFICATIONS FOR CURBS AND GUTTERS.

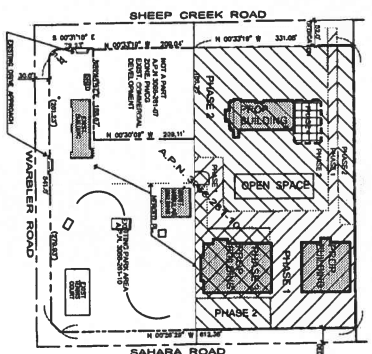
6. ALL CONSTRUCTION SHALL BE IN ACCORDANCE WITH THE CALIFORNIA CIVIL ENGINEERING BOARD (C.C.E.B.) SPECIFICATIONS FOR CURBS AND GUTTERS.

7. ALL CONSTRUCTION SHALL BE IN ACCORDANCE WITH THE CALIFORNIA CIVIL ENGINEERING BOARD (C.C.E.B.) SPECIFICATIONS FOR CURBS AND GUTTERS.

8. ALL CONSTRUCTION SHALL BE IN ACCORDANCE WITH THE CALIFORNIA CIVIL ENGINEERING BOARD (C.C.E.B.) SPECIFICATIONS FOR CURBS AND GUTTERS.

9. ALL CONSTRUCTION SHALL BE IN ACCORDANCE WITH THE CALIFORNIA CIVIL ENGINEERING BOARD (C.C.E.B.) SPECIFICATIONS FOR CURBS AND GUTTERS.

10. ALL CONSTRUCTION SHALL BE IN ACCORDANCE WITH THE CALIFORNIA CIVIL ENGINEERING BOARD (C.C.E.B.) SPECIFICATIONS FOR CURBS AND GUTTERS.



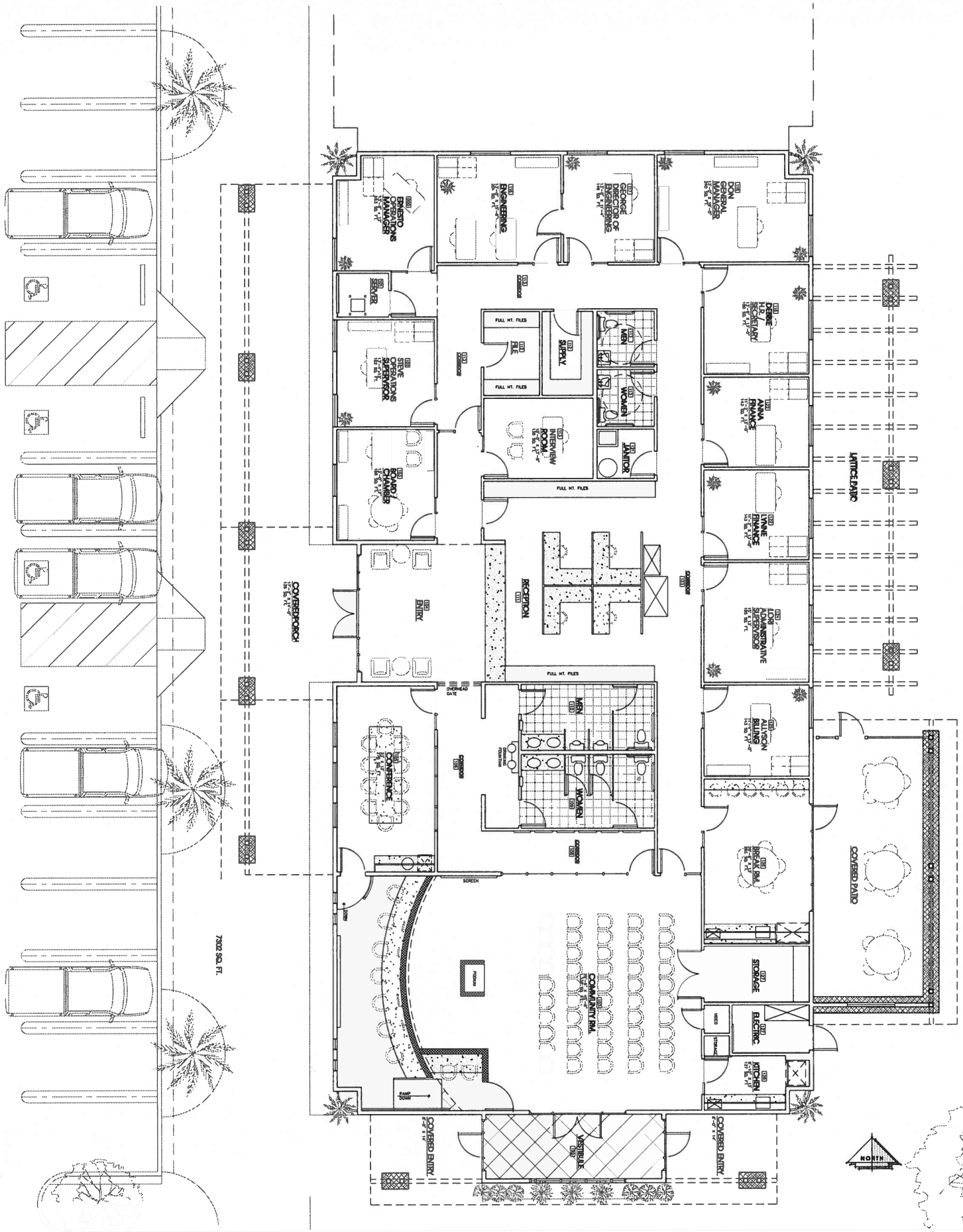
**PROJECT: COMMERCIAL DEVELOPMENT**  
**PHELAN / PINION HILLS C.S.D.**

**DATE:** 01/15/2019  
**PROJECT NO.:** PH19-01  
**SHEET NO.:** C-1

**STEENO ARCHITECTURAL & PLANNING**

**ADDRESS:** 11774 HERRING ROAD, SUITE 100, HERRING, CA 95031  
**PHONE:** (925) 745-6800  
**WWW:** WWW.STEENO.COM

**REGISTERED PROFESSIONAL ARCHITECTS AND PLANNERS**  
 STATE OF CALIFORNIA  
 LICENSE NO. 10000-10000



**FLOOR PLAN** SCALE = 1/8" = 1'-0"

A-1

PROJECT: COMMERCIAL DEVELOPMENT  
**PHELAN / PINION HILLS C.S.D.**  
 CITY ADDRESS: 11774 HERRICK ROAD SUITE 100, PINION HILLS, CA 93703  
 CONTRACTOR: BOBBY BARTZ  
 ARCHITECT: STEENO DESIGN STUDIO

THIS DOCUMENT IS THE PROPERTY OF STEENO DESIGN STUDIO. IT IS TO BE USED ONLY FOR THE PROJECT AND SITE SPECIFICALLY IDENTIFIED HEREIN. IT IS NOT TO BE REPRODUCED, COPIED, OR TRANSMITTED IN ANY FORM OR BY ANY MEANS, ELECTRONIC OR MECHANICAL, INCLUDING PHOTOCOPYING, RECORDING, OR BY ANY INFORMATION STORAGE AND RETRIEVAL SYSTEM, WITHOUT THE WRITTEN PERMISSION OF STEENO DESIGN STUDIO. THE USER OF THIS DOCUMENT AGREES TO HOLD STEENO DESIGN STUDIO HARMLESS FROM AND AGAINST ALL CLAIMS, DAMAGES, LOSSES, AND EXPENSES, INCLUDING REASONABLE ATTORNEY'S FEES, THAT MAY BE ASSERTED AGAINST STEENO DESIGN STUDIO BY ANY THIRD PARTY AS A RESULT OF THE USER'S USE OF THIS DOCUMENT.

**STEENO**  
 DESIGN STUDIO...  
 ARCHITECTURE • DESIGN • PLANNING  
 11774 HERRICK ROAD SUITE 100, PINION HILLS, CA 93703  
 PHONE (805) 864-2007 FAX (760) 864-1940  
 EMAIL: ESTUDIO@STEENO-DESIGN.COM