



**WHAT YOU NEED
TO KNOW ABOUT**

BUSINESS RECYCLING

It's the law

AB 939, AB 75, **AB 341**, AB 1826, AB 876

AB 341 - Solid Waste Diversion

Established commercial diversion mandates, a statewide goal of 75% diversion, and redefined what diversion is.

The District adopted Ordinances 2017-02 & 2017-03 which mandates commercial solid waste and recycling service. Service is now mandatory and all commercial entities must comply.

How to get started

It's easy to recycle at your business. Post the attached flier and start recycling today.

Recycling is placed in your recycling bin for pickup by CR&R. Or, you can self-haul recyclables with a District permit.

Contact the District for a service application.

Where to go for more information

Visit our website at www.pphcsd.org

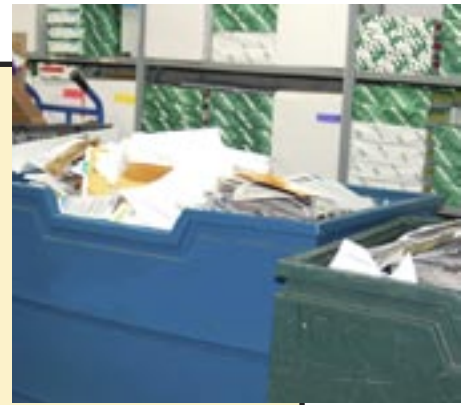
For additional general information about recycling and waste reduction, visit the California Department of Resources Recycling and Recovery (CalRecycle) at www.calrecycle.ca.gov.

PHELAN PIÑON HILLS CSD
SOLID WASTE
SERVICES 

Types of material to recycle



- Aluminum cans and metal cans
- Cardboard and chipboard
- Plastic and glass bottles and jars
- Clean, dry office paper
- Catalogs, magazines, junk mail and other mixed paper
- Plastic items without metal.



No



- Ceramics or broken glass
- Contaminated or wet paper
- Food waste
- Rubber tires
- Hazardous waste — paint, batteries, antifreeze, pesticides, cleaning products, appliances, cell phones, TVs, computer monitors
- Do not place these materials in dumpsters. For information on proper disposal or recycling of these materials, call the District Office at (760) 868-1212.



LOSE THE
LANDFILL
REDUCE REUSE RECYCLE