



Phelan Piñon Hills Community Services District

4176 Warbler Rd. Phelan Ca 92371 • P. O. Box 294049 • Phelan, CA 92329-4049 • (760) 868-1212 Fax (760) 868-2323

Notice of Water Rate Change

The Board of Directors and District staff have worked on system improvements and efficiencies to help minimize additional costs of service such as electricity and water replacement. However, rising costs and unfunded state mandates, including mandated conservation measures and statewide changes in drinking water standards, have offset District efficiencies. After a comprehensive rate study, several public workshops, and a public hearing, the Board of Directors approved a multi-year rate change on January 20, 2016. The new rates will be effective July 1, 2017 and will be reflected beginning on your August 1, 2017 bill.

Below is the rate increase schedule as approved by the Board of Directors.

Water rates for all customers of the Phelan Piñon Hills Community Services District are scheduled to change beginning with the August 1, 2017 bill. These new rates will be effective July 1, 2017 and will reflect on the August 1, 2017 billing statements*.

**The rates will become effective to coincide with the reading of the meters that occur approximately one week prior to the effective date indicated above.*

If you have any questions, please contact the District at (760) 868-1212.

For additional information and to use the rate calculator, please visit our website at www.pphcsd.org.

New Water Rates

		Effective Date 07/01/2017	
Meter Size		Meter Charge (per month)	
3/4"		\$17.90	
1"		\$27.46	
1 1/2"		\$51.34	
2"		\$80.00	
3"		\$146.87	
4"		\$242.41	
Chromium-6 Surcharge		Flat Rate (per month)- \$9.71	
Residential	Consumption	Drought Surcharge	Total (per unit)
Tier 1 (0-12 units)	\$1.30	\$1.05	\$2.35
Tier 2 (12-plus units)	\$2.06	\$1.65	\$3.71
Commercial	Consumption	Drought Surcharge	Total (per unit)
Tier 1 (0-12 units)	\$1.46	\$1.35	\$2.81
Tier 2 (12-plus units)	\$1.46	\$1.35	\$2.81
School	Consumption	Drought Surcharge	Total (per unit)
Tier 1 (0-12 units)	\$1.63	\$1.35	\$2.98
Tier 2 (12-plus units)	\$1.63	\$1.35	\$2.98
Construction	Consumption	Drought Surcharge	Total (per unit)
Tier 1 (0-12 units)	\$2.37	\$1.35	\$3.72
Tier 2 (12-plus units)	\$2.37	\$1.35	\$3.72
Fire	Consumption	Drought Surcharge	Total (per unit)
Tier 1 (0-12 units)	\$1.68	\$1.35	\$3.03
Tier 2 (12-plus units)	\$1.68	\$1.35	\$3.03

* 1 unit = 748 gallons

GET TO KNOW YOUR WATER METER

What would you do if you had an emergency repair or leak at your house? Do you know where your meter is and how to shut it off? Use this helpful guide to do just that.

1. Know Its Location

Water meters are enclosed inside a water meter box outside your home. These boxes can be concrete, polymer, and green or black plastic. You will find them either located in the street at the front of your property or possibly on the next street or behind your property. Contact the District for the exact location of your meter.

2. To Gain Access to the Water Meter

Use a large screwdriver to lift up and slide the meter lid aside. Meter box lids can be concrete, polymer, plastic (green or black) or steel.

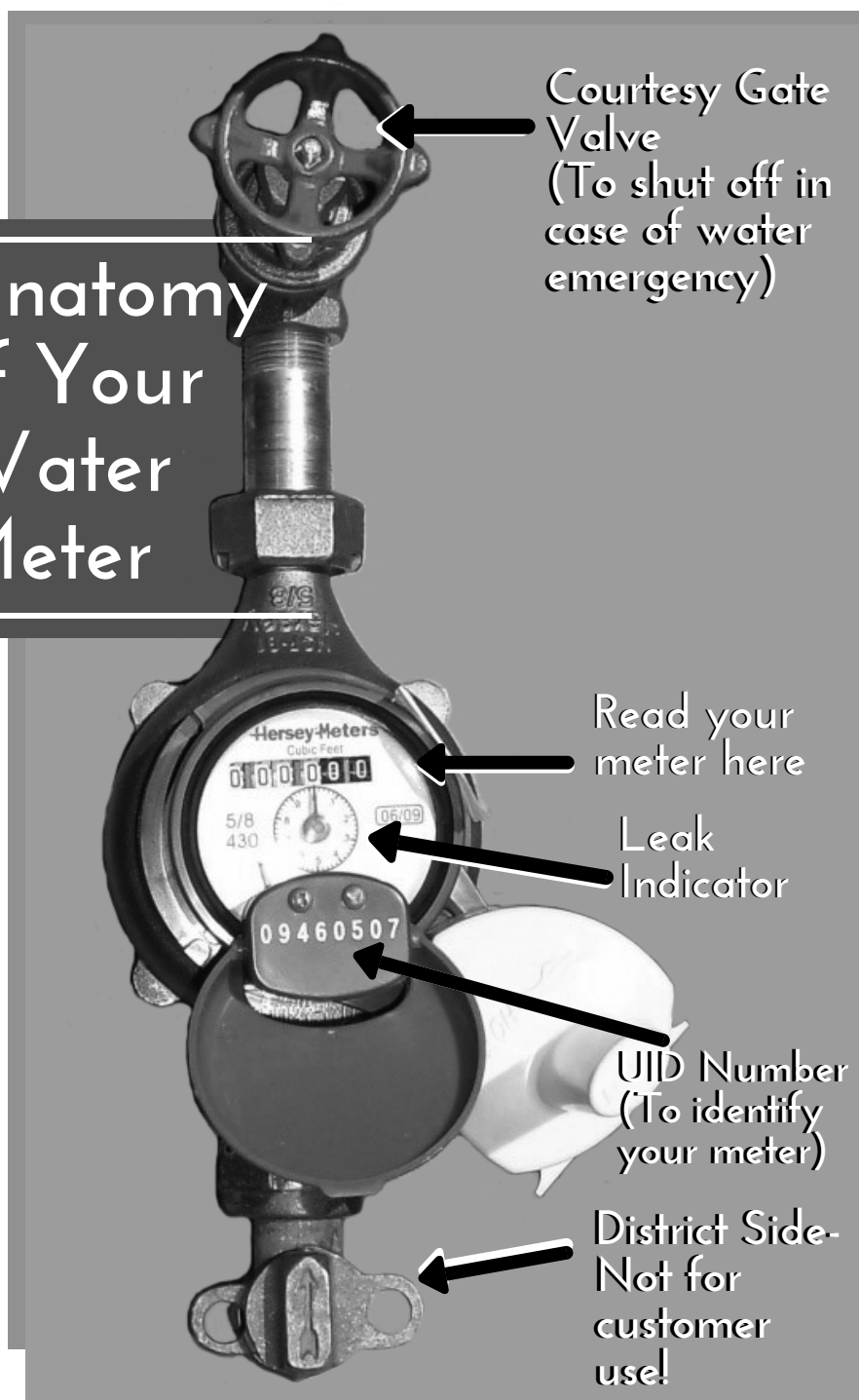
3. Watch for Hazards In and Around Your Meter

Be cautious around the meter box and meter. Watch for bees, wasps, spiders, or snakes. Other insects may be around and inside the box. Wear gloves when removing the lid, to prevent smashing fingers.

4. To Locate the Main Water Supply Shut Off

- Inside the meter box (on the house/customer side of the meter), there will either be a wheel handle (gate valve) or a straight handle (ball valve). The wheel valve can be turned clock wise to shut water off. The ball valve should be turned at a right angle to shut off water.
- Do not force the valve! If you are unsure about the location of the shut off valve, or if you cannot turn or access the shut off valve, contact the District for assistance. We will be happy to help!

Anatomy of Your Water Meter



4176 Warbler Road
Phelan, CA 92371
760-868-1212
www.pphcsd.org